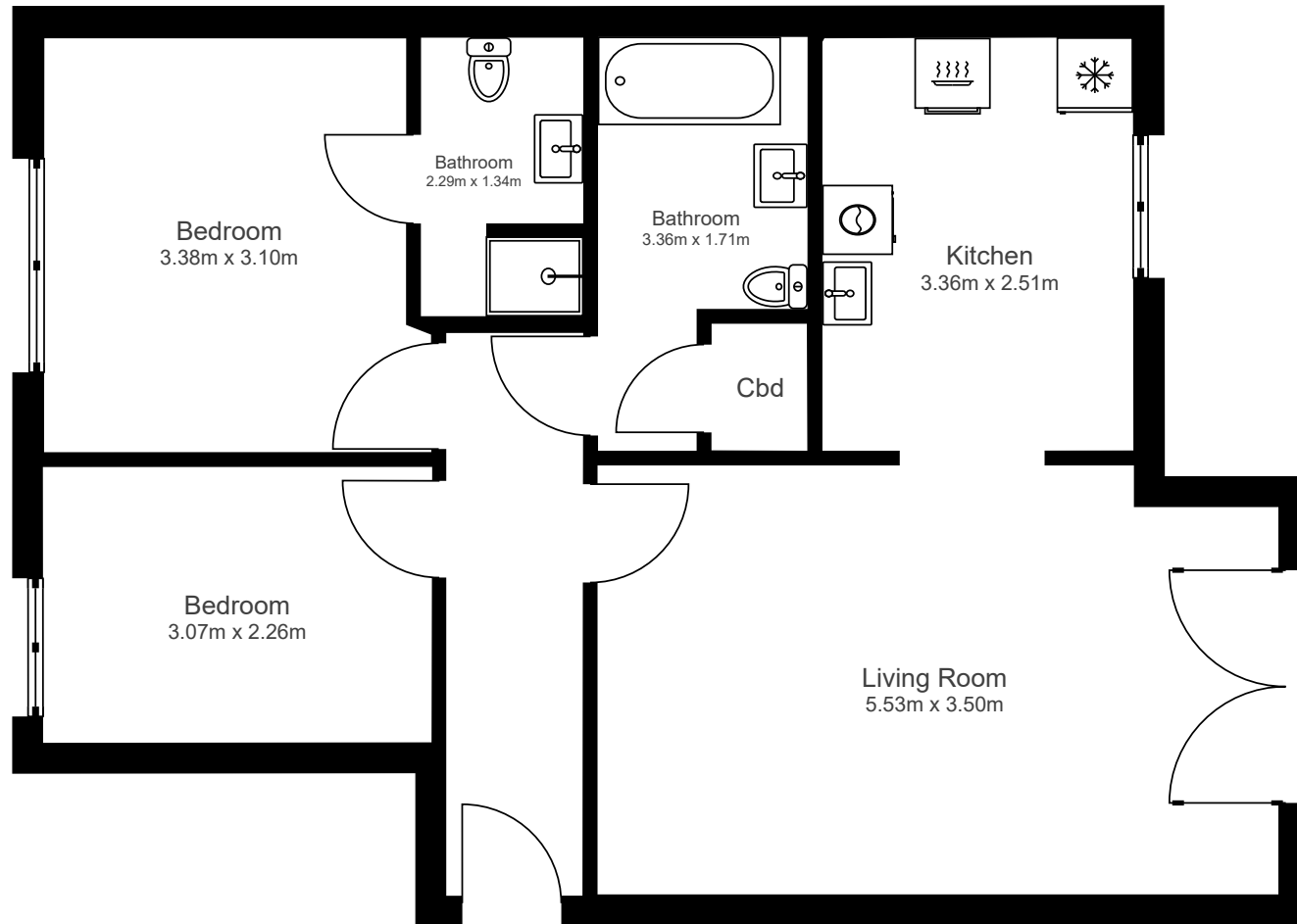


39 Tye Road, Ipswich, Suffolk IP3 0FJ



This floor plan is for illustrative purposes only. It is not drawn to scale. Any measurements, floor areas, openings and orientations are approximate. No details are guaranteed, they cannot be relied upon for any part of any agreement. No liability is taken for any error, omission or misstatement. A party must rely upon its own inspection(s).